



**SEQUENCE VALVE,
FOOT VALVE SERIES**

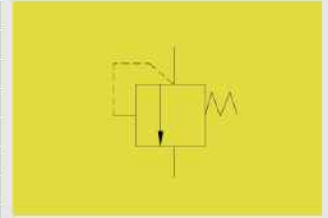


Product Description

Be used for the control of mining hydraulic frame system, suited for various hydraulic control circuits and achieve sequencing action.

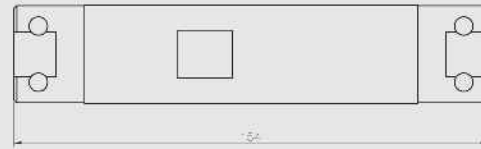
Technical parameters:

Material:	Stainless material
Nominal pressure:	31.5MPa
Nominal flow:	125L/min
Working media:	Emulsion meeting MT 76-2002 standards
Interface:	DN or KJ series



1

**GSXF SEQUENCE
VALVE**



Product Description

Control the extension and retraction sequences of double extension and retraction stand column secondary cylinder and moveable column and ensures the pressure of secondary cylinder is maintained as same with that of first cylinder. It is one-way valve mechanical driven, its hydraulic opening force can be adjusted so as to make sure the first cylinder will be first extended during column lifting.

Common model	L1	L2	L3	A1	A2
SL4.00	110	10.3	12	φ45	φ60
SL3.03	101.5	2.5	10	φ48	φ70
FLDK1.00	85	1.5	10	φ45	φ70
GBFA	106.5	10	12	φ45	φ53
FLDK1.00	85	10.5	10	φ45	φ70
FLDK2.00	104	5.6	12	φ45	φ70
FLDK3.00	105	7.6	12	φ48	φ65

2

BOTTOM VALVE

