

N HYDRAULIC SUPPORTS AUTOMATIC SPRAY CONTROL VALVE



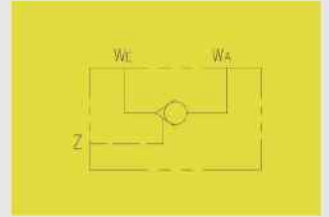
1 SPRAY VALVE

Product Description

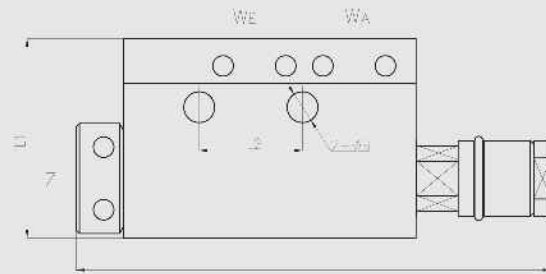
Be used for the control of mining hydraulic frame system, it functions as the switch of spraying water and suppressing dust for top coal mining face, so it can control the opening and closing of dust suppression water.

Technical parameters:

Material:	Stainless material
Working media:	Emulsion and clean water meeting MT 76-2002 standards
Interface:	DN or KJ series fast connector



Safety standard model	L	L1	L2	Z, WE, WA	Thickness	Inlet water pressure : Mpa
FYP10	138	58	30	Dn10	38	5



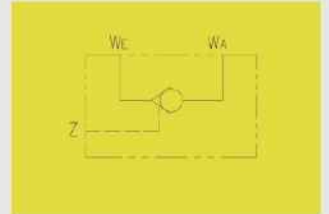
2 SPRAY VALVE

Product Description

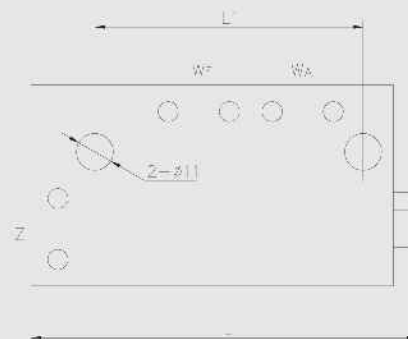
Be used for the control of mining hydraulic frame system, it functions as the switch of spraying water and suppressing dust for top coal mining face, so it can control the opening and closing of dust suppression water.

Technical parameters:

Material:	Stainless material
Working media:	Emulsion and clean water meeting MT 76-2002 standards
Interface:	DN or KJ series fast connector



Safety standard model	L	L1	Z, WE, WA	Thickness	Inlet water pressure : Mpa
FYP10	112	70	DN10	38	5
FYP10	115	80	DN10	30	5



N HYDRAULIC SUPPORTS AUTOMATIC SPRAY CONTROL VALVE



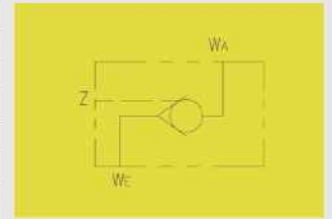
3 SPRAY VALVE

Product Description

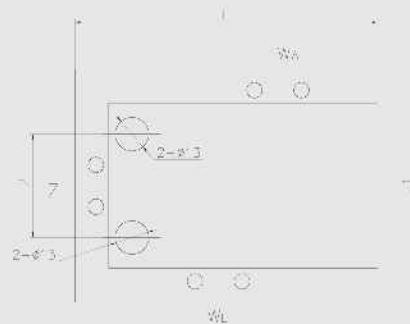
Be used for the control of mining hydraulic frame system, it functions as the switch of spraying water and suppressing dust for top coal mining face, so it can control the opening and closing of dust suppression water.

Technical parameters:

Material:	Stainless material
Working media:	Emulsion and clean water meeting MT 76-2002 standards
Interface:	DN or KJ series fast connector



Safety standard model	L	L1	L2	WA, WE, Z	Thickness	Common model
FYP10	117	90	40	DN10	40	PSF3.00
FYP10	138	96	50	DN10	42	PSF2.00



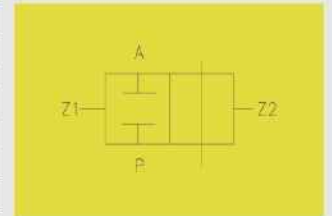
4 SPRAY VALVE

Product Description

Be used for the control of mining hydraulic frame system, it functions as the switch of spraying water and suppressing dust for top coal mining face, so it can control the opening and closing of dust suppression water.

Technical parameters:

Material:	Stainless material
Working media:	Emulsion and clean water meeting MT 76-2002 standards
Interface:	DN or KJ series fast connector



Safety standard model	L	L1	L2	Z1, Z2	P, A	Thickness	Common model
FYP13	159.3	60	53	KJ10	KJ13	53	YPF160/40

