

**L SAFETY VALVE SERIES**



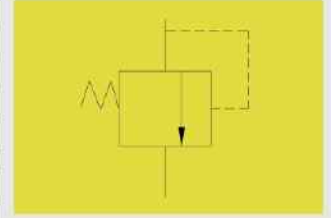
**1 SAFETY VALVE**

**Product Description**

Be used for the control of mining hydraulic frame system, control the frame actual working resistance within the allowable range.

**Technical parameters:**

Material:	Stainless material
Nominal pressure:	50MPa
Nominal flow:	32L/min、100 L/min
Working media:	Emulsion meeting MT 76-2002 standards
Interface:	DN or KJ series or thread connector



Safety standard model	A	L	Nominal flow: L/min	Common model
FAZ32/50	M27X1.5or fast interface	125	32	ZHYFII
FAZ100/50	M27X1.5or fast interface	129	100	BSYFI
FAZ100/50	M27X1.5or fast interface	142	100	DAF.00



**L LARGE TRAFFIC SAFETY VALVES SERIES**



**2 LARGE FLOW SAFETY VALVE**

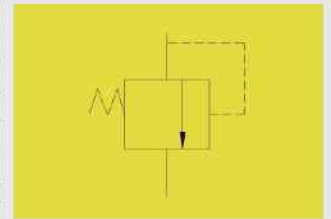
**Product Description**

Be used for the control of mining hydraulic frame system, control the frame actual working resistance within the allowable range.

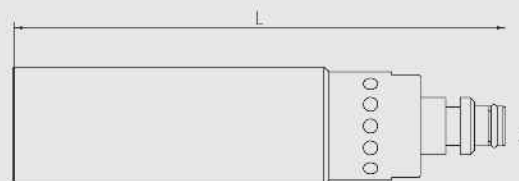
Product characteristics: high nominal pressure, large flow, small volume, compact structure, suitable for the hydraulic frame large traffic control system with high working resistance.

**Technical parameters:**

Material:	Stainless material
Nominal pressure:	50MPa
Nominal flow:	200L/min、250L/min
Working media:	Emulsion meeting MT 76-2002 standards
Interface:	DN or KJ series or thread connector



Safety standard model	A	L	Nominal pressure:Mpa	Nominal flow: L/min
FAD200/50	M27x1.5or fast interface	180	50	200
FAD250/50	M27x1.5or fast interface	180	50	250





**LARGE TRAFFIC SAFETY VALVES SERIES**



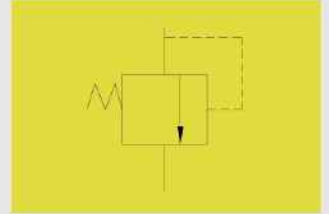
**Product Description**

Be used for the control of mining hydraulic frame system, control the frame actual working resistance within the allowable range.

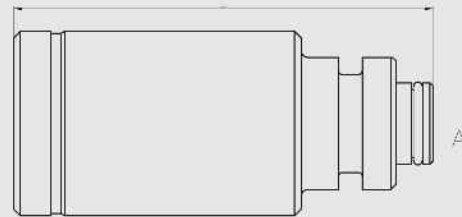
Product characteristics: high nominal pressure, large flow, small volume, compact structure, suitable for the hydraulic frame large traffic control system with high working resistance.

**Technical parameters:**

Material:	Stainless material
Nominal pressure:	50MPa
Nominal flow:	320L/min
Working media:	Emulsion meeting MT 76-2002 standards
Interface:	DN or KJ series or thread connector



Safety standard model	A	L	Nominal pressure:Mpa	Nominal flow: L/min
FAD320/50	DN20/DN25	124	50	320



**LARGE FLOW SAFETY VALVE**



**Product Description**

Be used for the control of mining hydraulic frame system, control the frame actual working resistance within the allowable range.

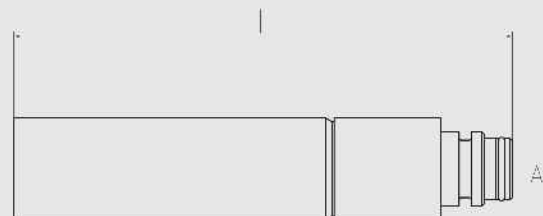
Product characteristics: high nominal pressure, large flow, small volume, compact structure, suitable for the hydraulic frame large traffic control system with high working resistance.

**Technical parameters:**

Material:	Stainless material
Nominal pressure:	50MPa
Nominal flow:	500L/min
Working media:	Emulsion meeting MT 76-2002 standards
Interface:	DN or KJ series or thread connector



Safety standard model	A	L	Nominal pressure:Mpa	Nominal flow: L/min
FAD500/50	thread interface or fast connector	195	50	500



**LARGE FLOW SAFETY VALVE**

**L** LARGE TRAFFIC SAFETY VALVES SERIES

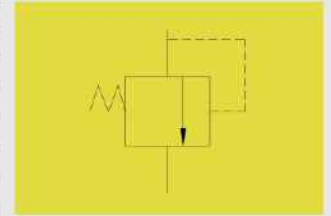


**Product Description**

Be used for the control of mining hydraulic frame system, control the frame actual working resistance within the allowable range.  
 Product characteristics: high nominal pressure, large flow, small volume, compact structure, suitable for the hydraulic frame large traffic control system with high working resistance.

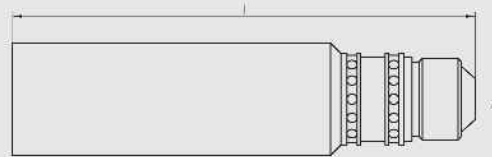
**Technical parameters:**

Material:	Stainless material
Nominal pressure:	50MPa
Nominal flow:	1000L/min
Working media:	Emulsion meeting MT 76-2002 standards
Interface:	DN or KJ series or thread connector



**5** LARGE FLOW SAFETY VALVE

Safety standard model	A	L	Nominal pressure:Mpa	Nominal flow: L/min
FAD1000/50	M40x2or fast connector	227	50	1000



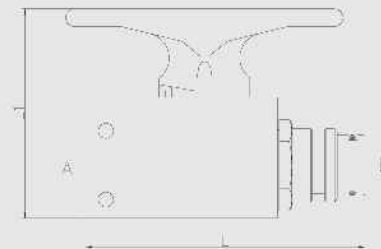
**M** SHUT-OFF VALVE SERIES



**Technical parameters:**

Be used for the control of mining hydraulic frame system and activation, deactivation of each hydraulic path. This product is with reliable high and low pressure sealing, reliable operation, small operation torque and gets rid of the large torque problem of conventional spherical ball valve with large diameter.

Safety standard model	Connector diameter A, B	L	H	Thickness	Nominal pressure: Mpa	Nominal flow: L/min	Common model
FJQ80/31.5	DN10	105	75	34	31.5	80	QJDN10
FJQ125/31.5	DN 12.5	105	75	34	31.5	125	QJDN12
FJQ200/31.5	DN 16	111	83	40	31.5	200	QJDN16
FJQ200/31.5	DN 19	111	83	40	31.5	200	QJDN20
FJQ400/31.5	DN 25	133	95	51	31.5	400	QJDN25
FJQ500/31.5	DN 31.5	169	97	60	31.5	500	QJDN32



**1** SELF-LOCKING SPHERICAL SERIES CUT-OFF VALVE