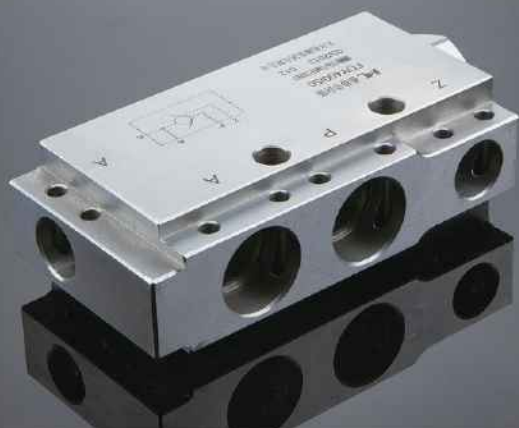




## GOES ON A ONE-WAY VALVE



7

## GOES BY JACK-WAY VALVE

I

## FAST LIQUID SUPPLY VALVE



1

## FAST LIQUID SUPPLY VALVE

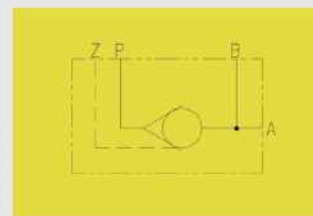
### Product Description

Be used for the control of mining hydraulic frame system and fulfill the opening and blockage of the working chamber of jacking.

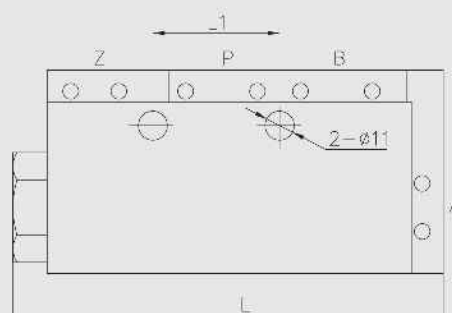
### Technical parameters:

**Structure:** Use valve core whole inserted structure, easy to installation, operation and maintenance. The valve core uses 2nd class of disassembly structure, effectively lengthen lifespan, get rid of the impact, noise faults of common hydraulic single-way valve.

<b>Material:</b>	Stainless material
<b>Nominal pressure:</b>	50MPa
<b>Nominal flow:</b>	400L/min
<b>Working media:</b>	Emulsion meeting MT 76-2002 standards
<b>Interface:</b>	DN or KJ series



Safety standard model	L	L1	Z、A	P、B	Thickness
FDY400/50	164	48	DN10	DN20	48

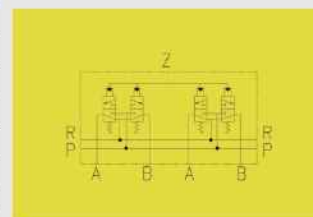


### Product Description

Be used for the control of mining hydraulic frame system with high mining face. During column lifting, four valve cores simultaneously supply liquid for the lower chamber to fulfill rapid liquid supply. During column landing, one of the liquid returning channel passes the rapid liquid supply valve, another channel directly flows back to achieve fast liquid returning.

### Technical parameters:

<b>Structure:</b>	Integrated valve, modular structure, inserted valve core
<b>Material:</b>	Stainless material
<b>Nominal pressure:</b>	31.5MPa
<b>Nominal flow:</b>	800L/min
<b>Working media:</b>	Emulsion meeting MT 76-2002 standards
<b>Interface:</b>	DN or KJ series



Safety standard model	L	L1	High	P	R	A、B	Z
FGL800/31.5	215	116	110	DN25	DN32	DN20	DN10

