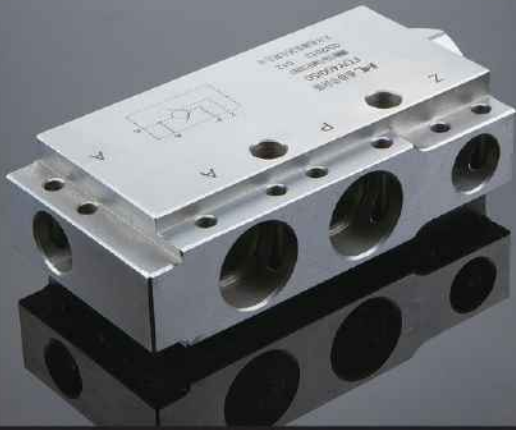




GOES ON A ONE-WAY VALVE

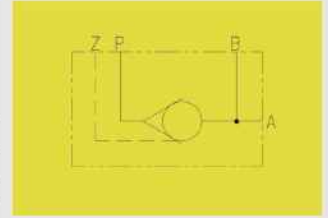


Product Description

Be used for the control of mining hydraulic frame system and fulfill the opening and blockage of the working chamber of jacking.

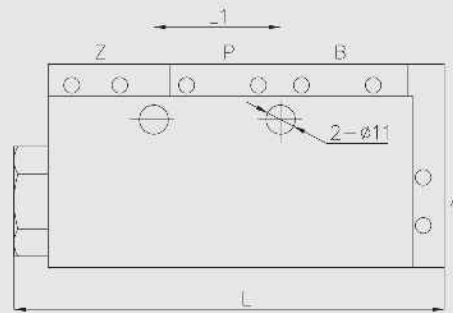
Technical parameters:

Structure:	Use valve core whole inserted structure, easy to installation, operation and maintenance. The valve core uses 2nd class of disassembly structure, effectively lengthen lifespan, get rid of the impact, noise faults of common hydraulic single-way valve.
Material:	Stainless material
Nominal pressure:	50MPa
Nominal flow:	400L/min
Working media:	Emulsion meeting MT 76-2002 standards
Interface:	DN or KJ series



GOES BY JACK-WAY VALVE

Safety standard model	L	L1	Z, A	P, B	Thickness
FDY400/50	164	48	DN10	DN20	48



FAST LIQUID SUPPLY VALVE

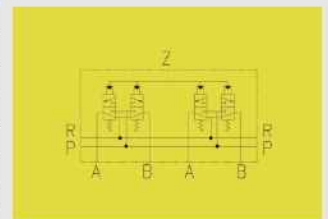


Product Description

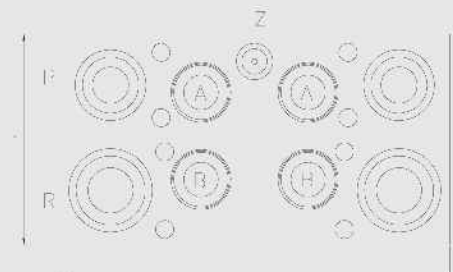
Be used for the control of mining hydraulic frame system with high mining face. During column lifting, four valve cores simultaneously supply liquid for the lower chamber to fulfill rapid liquid supply. During column landing, one of the liquid returning channel passes the rapid liquid supply valve, another channel directly flows back to achieve fast liquid returning.

Technical parameters:

Structure:	Integrated valve, modular structure, inserted valve core
Material:	Stainless material
Nominal pressure:	31.5MPa
Nominal flow:	800L/min
Working media:	Emulsion meeting MT 76-2002 standards
Interface:	DN or KJ series

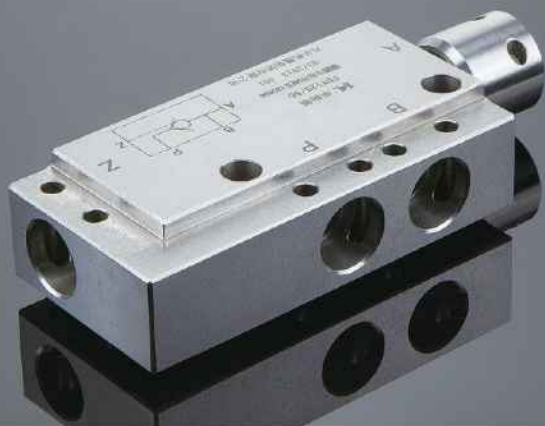


Safety standard model	L	L1	High	P	R	A, B	Z
FGL800/31.5	215	116	110	DN25	DN32	DN20	DN10



FAST LIQUID SUPPLY VALVE

H GOES ON A ONE-WAY VALVE

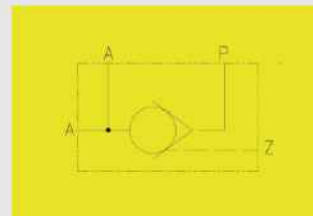


Product Description

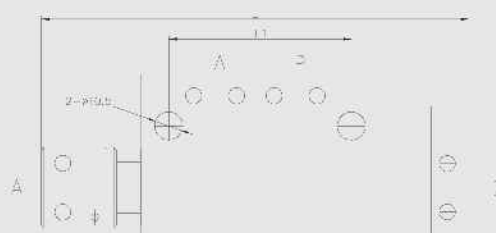
Be used for the control of mining hydraulic frame system and fulfill the opening and blockage of the working chamber of oil cylinder.

Technical parameters:

Structure:	Use valve core whole inserted structure, easy to installation, operation and maintenance.
Material:	Stainless material
Nominal pressure:	50MPa
Nominal flow:	125L/min
Working media:	Emulsion meeting MT 76-2002 standards
Interface:	DN or KJ series



Safety standard model	L	L1	A, P, Z	Thickness
FDY125/50	160	68	DN10	30



1 GOES BY JACK-WAY VALVE

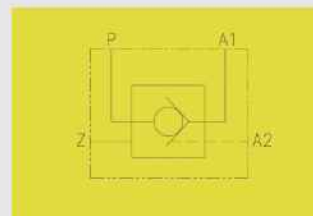


Product Description

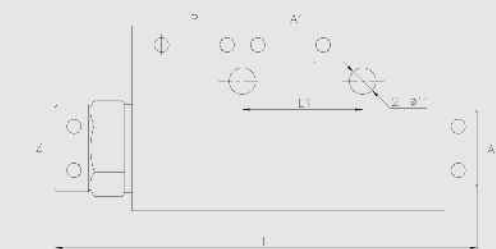
Be used for the control of mining hydraulic frame system and fulfill the opening and blockage of the working chamber of jacking.

Technical parameters:

Structure:	Use valve core whole inserted structure, easy to installation, operation and maintenance. The valve core uses 2nd class of disassembly structure, effectively lengthen lifespan, get rid of the impact, noise faults of common hydraulic single-way valve.
Material:	Stainless material
Nominal pressure:	50MPa
Nominal flow:	400L/min
Working media:	Emulsion meeting MT 76-2002 standards
Interface:	DN or KJ series



Safety standard model	L	L1	Z, A2	P, A1	Thickness
FDY400/50	175.8	50	DN10	DN20	48



2 GOES BY JACK-WAY VALVE

H GOES ON A ONE-WAY VALVE



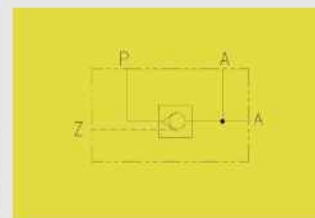
3 GOES BY JACK-WAY VALVE

Product Description

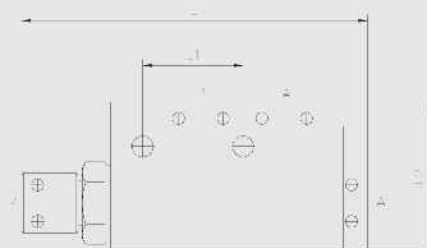
Be used for the control of mining hydraulic frame system and fulfill the opening and blockage of the working chamber of jacking.

Technical parameters:

Structure:	Use valve core whole inserted structure, easy to installation, operation and maintenance. The valve core uses 2nd class of disassembly structure, effectively lengthen lifespan, get rid of the impact, noise faults of common hydraulic single-way valve.
Material:	Stainless material
Nominal pressure:	50MPa
Nominal flow:	400L/min
Working media:	Emulsion meeting MT 76-2002 standards
Interface:	DN or KJ series



Safety standard model	L	L1	L2	A	P	Z	Thickness
FDY200/50	172.3	50	74	DN10	DN12	DN10	48

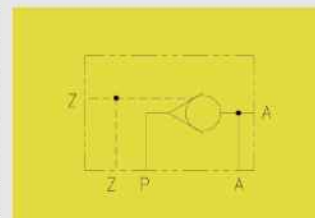


Product Description

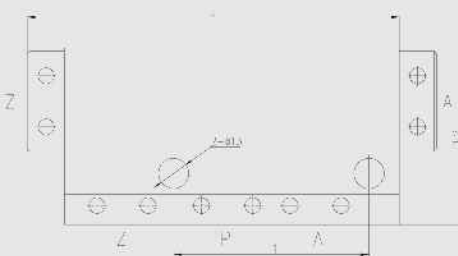
Be used for the control of mining hydraulic frame system and fulfill the opening and blockage of the working chamber of jacking.

Technical parameters:

Nominal pressure:	50MPa
Nominal flow:	400L/min
Working media:	Emulsion meeting MT 76-2002 standards
Interface:	DN or KJ series
Material:	Stainless material



Safety standard model	L	L1	L2	A	Thickness	Common model
FDY400/50	160	84	76	KJ16	46	DS16



4 GOES BY JACK-WAY VALVE

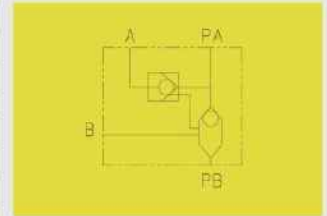


Product Description

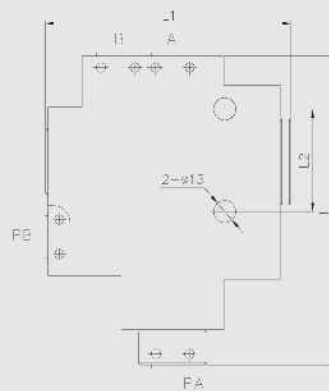
Be used for the control of mining hydraulic frame system and fulfill the action of jacking, and differential control of goes on jacking, saving the piston extension time and improving working efficiency.

Technical parameters:

Nominal pressure:	50MPa
Nominal flow:	125L/min、200L/min
Material:	Stainless material
Working media:	Emulsion meeting
	MT 76-2002 standards
Interface:	DN or KJ series



Safety standard model	L	L1	A、P、Z	Thickness
FZC125/31.5	181	144	KJ13	52
FZC200/31.5	181	144	KJ19	52



DIFFERENTIAL PRESSURE COMBINATION VALVE

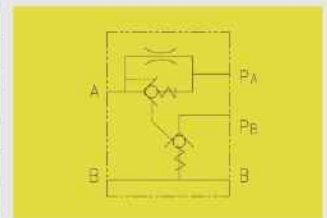


Product Description

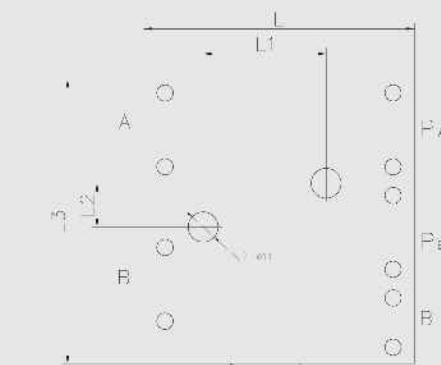
Be used for the control of mining hydraulic frame system and fulfill the opening and blockage of the working chamber of jacking. Combine the soft startup and hydraulic one-way valve, effectively get rid of the safety valve opening and mechanical impact problems during goes on jacking.

Technical parameters:

Nominal pressure:	50MPa
Nominal flow:	400L/min
Material:	Stainless material
Working media:	Emulsion meeting
	MT 76-2002 standards
Interface:	DN or KJ series



Safety standard model	L	L1	L2	L3	A	B	PA	PB	Thickness
FDY400/50	99.5	45	16	104	DN20	DN10	DN20	DN20	40



PULL DOWN THE PASSAGE OF A ONE-WAY VALVE