

Capillary Manometer

Application: typically for boilers

Model: CM37



Specification:

Case: reinforced nylon, standard colours black or white, other colours on request, case dia 37mm

Frame: 40mm

Fixing system: moulded-in elastic tabs.

Maximum casing withstanding temperature: 70 deg C

Window: shatterproof clear plastic, red reset pointer

Capillaries: PVC-coated copper; standard lengths 0,5 - 1 - 1,5 metres, other lengths on request.

Fitting: brass; G1/4 as standard, G1/8, M14x1, fast connections and special design on request.

Movement: copper alloy, high-sensitivity amplification mechanism

Socket: Brass

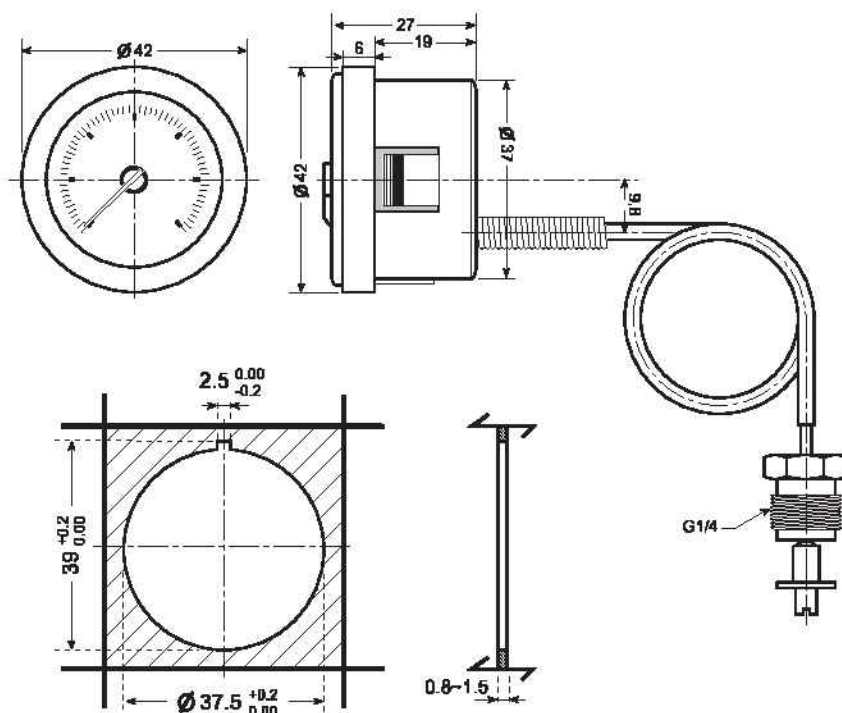
Bourdon tube: "C" shape in phosphor copper

Dial: printed plastic dial. Custom designed dials on request

Pointer: plastic

Scales: 0/4 or 0/6 bar; other scales on request.

Accuracy: $\pm 3\%$ of full scale



Capillary Manometer

Application: typically for boilers

Model: CM40



Specification:

Case: reinforced nylon, standard colours black or white, other colours on request, case dia 40mm

Frame: 43mm

Fixing system: moulded-in elastic tabs.

Maximum casing withstanding temperature: 70 deg C

Window: shatterproof clear plastic

Capillaries: PVC-coated copper; standard lengths 0,5 - 1 - 1,5 metres, other lengths on request.

Fitting: brass; G1/4 as standard, G1/8, M14x1, fast connections and special design on request.

Movement: copper alloy, high-sensitivity amplification mechanism

Socket: Brass

Bourdon tube: "C" shape in phosphor copper

Dial: printed plastic dial. Custom designed dials on request

Pointer: plastic

Scales: 0/4 or 0/6 bar; other scales on request.

Accuracy: $\pm 3\%$ of full scale

