



**PILOT VALVE SERIES**



**1**

**THE AIRCRAFT PILOT VALVE**

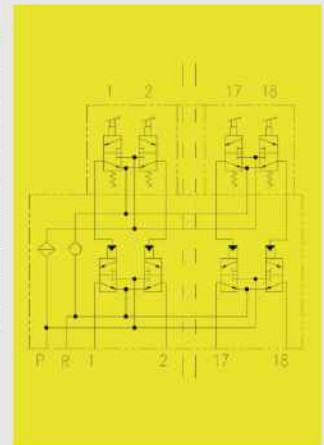
**Product Description**

Used for the action control of hydraulic bracket stand column and jacking, and fulfill bracket operation functions.

This valve is composed of the hydraulic reversing valve and pilot valve, and mainly used for conventional seam, thin seam and top coal placing brackets. This valve is with compact structure, small volume, small operation torque, tube draw free design, easy to maintain; According to the bracket stand column and jacking quantity and control requirements, select the valve core and connector with corresponding quantity and flow.

**Technical parameters:**

Structure:	Integrated valve, modular structure, inserted valve core
Material:	Stainless material
Nominal pressure:	35MPa
Nominal flow:	125、200、400、500L/min
Control mode:	Manual pilot control
Working media:	Emulsion meeting MT 76-2002 standard
Interface:	DN series or KJ series



**2**

**THE NEIGHBORING SUPPORT PILOT VALVE**



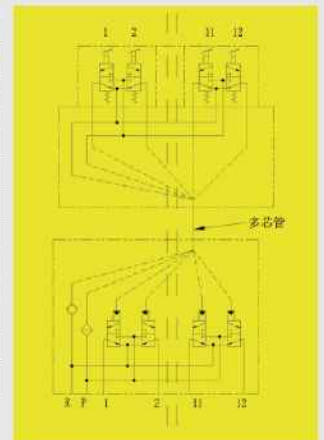
**Product Description**

Used for the action control of hydraulic bracket stand column and jacking, and fulfill adjacent frame operation. Multi-cores are integrated in one pipe, easy to installation. Rapid and simple pipe connection specially suits for the thin seam frame.

This valve is consisted of hydraulic control main valve, adjacent pilot valve and multi-core pipe. Install the pilot valve on adjacent frame, install the main valve on own bracket, then connect them through one pipe multi-core integrated. Operate the pilot valve of adjacent frame to complete the action of own bracket. In order to satisfy the control requirements of stand column and jacking of hydraulic bracket, the pilot reversing valve can be matched with different flows to form various reversing valve groups ranging from 2 functions to 24 functions based on users' demand.

**Technical parameters:**

Structure:	Integrated valve, modular structure, inserted valve core, integrated pipe with multi-cores
Material:	Stainless material
Nominal pressure:	35MPa
Nominal flow:	125L/min、200L/min 320L/min、400L/min 500L/min
Control mode:	Manual pilot control
Working media:	Emulsion meeting MT 76-2002 standard
Interface:	DN series or KJ series





**PILOT VALVE  
SERIES**



**3**

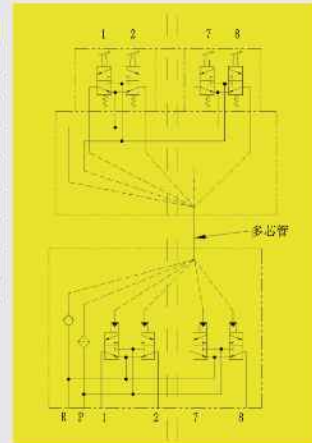
**THIN SEAM ADJACENT FRAME  
PILOT VALVE**

**Product Description**

Used for the action control of hydraulic bracket stand column and jacking, and fulfill adjacent frame operation. Multi-cores are integrated in one pipe, easy to installation. Rapid and simple pipe connection specially suits for the thin seam frame. This valve is consisted of hydraulic control main valve, adjacent pilot valve and multi-core pipe. Install the pilot valve on adjacent frame, install the main valve on own bracket, then connect them through one pipe multi-core integrated. Operate the pilot valve of adjacent frame to complete the action of own bracket. This valve is with compact structure, small volume, small operation torque, tube draw free design, easy to maintain; According to the bracket stand column and jacking quantity and control requirements, select the valve core and connector with corresponding quantity and flow.

**Technical parameters:**

Structure:	Integrated valve, inserted valve core, integrated pipe with multi-cores
Material:	Stainless material
Nominal pressure:	35MPa
Nominal flow:	125、200、400、500L/min
Working media:	Emulsion meeting MT 76-2002 standard
Interface:	DN series or KJ series



**4**

**THE ADJACENT FRAME  
PILOT VALVE**

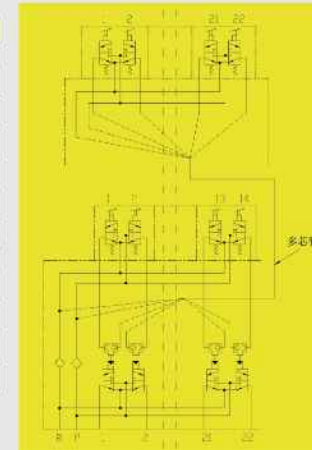
**Product Description**

Used for the action control of hydraulic bracket stand column and jacking, and fulfill local and adjacent frames operation, which satisfies customers' demand for local and adjacent frames operation under special conditions.

The local adjacent frame pilot valve is consisted of local frame hydraulic control main valve and adjacent pilot valve. The pilot valve is installed at the adjacent frame and local frame main valve is installed at local frame. The integrated pilot valve and hydraulic main valve can fulfill basic operation, adjacent frame operation and multi-adjacent frames operation. In order to satisfy the control requirements of stand column and jacking of hydraulic bracket, the pilot reversing valve can be matched with different flows to form various reversing valve groups ranging from 2 functions to 24 functions based on users' demand.

**Technical parameters:**

Structure:	Integrated valve, modular structure, inserted valve core, integrated pipe with multi-cores
Material:	Stainless material
Nominal pressure:	35MPa
Nominal flow:	125L/min、200L/min 320L/min、400L/min 500L/min
Control mode:	Manual pilot control
Working media:	Emulsion meeting MT 76-2002 standard
Interface:	DN series or KJ series





**C** PILOT VALVE SERIES



**Product Description**

The multi-core tube connects the adjacent pilot valve and hydraulic main valve to fulfill connection with only one tube. It uses stecko connection way, the connector position is adjustable with positioning function, can be produced with various lengths and angles.

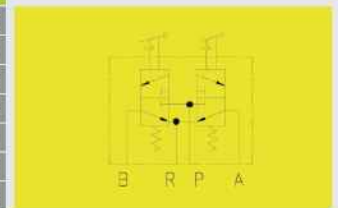
**5** MULTI-CORE TUBE

**Product Description**

The pilot valve outputs pressure signal to control the switch of hydraulic control main valve core, and it controls actions of two pilot valve cores through using independent dual-handle structure. This valve is with small volume, light weight, reliable sealing, long lifespan and small operation torque. The operation handle uses lifting operation mode, it has two kinds of handles, inching and self-locking handles. This valve can be directly used as a single valve.

**Technical parameters:**

Structure:	Modular structure
Material:	Stainless material
Nominal pressure:	35MPa
Nominal flow:	1.2L/min
Operation torque:	≤1.0N * m
Dimension:	38×20×63mm
Weight:	391g
Working media:	Emulsion meeting MT 76-2002 standard



**6** MANUAL PILOT VALVE